

# *AddPac*

## Door Access Solution

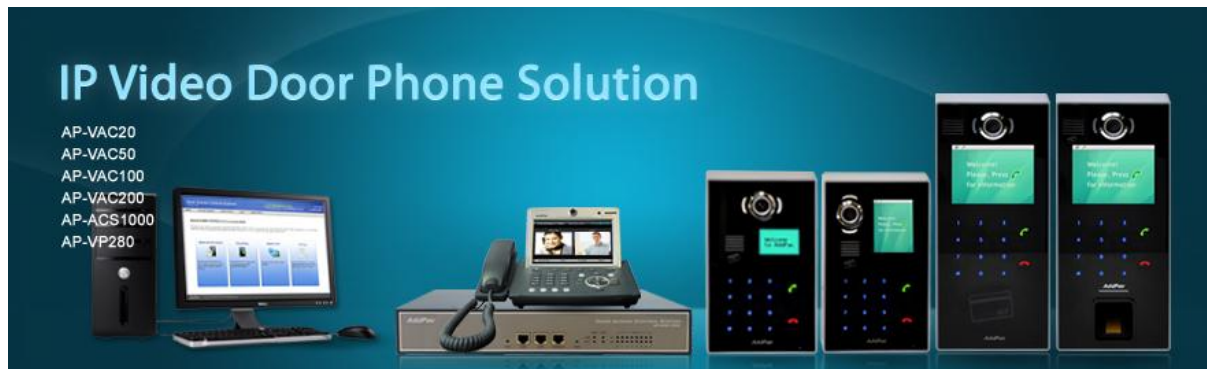




# Door Access Solution



1	IP Video Door Phone Solution
3	One-Touch Call Button IP Video Door Phone Solution
5	IP Video Door Phone Backend Product Solution
7	Video Surveillance IP Video Door Phone Solution
9	Time Attendance IP Door Phone Solution
11	HD IP Video Door Phone Solution

## IP Video Door Phone Solution




AddPac IP video door phone solution is to control the visitor access through video screen which can be installed at the entrance with internet connection. Video door phone (AP-VAC20, 50, 100, 200) uses SIP standard VoIP signaling process function to interwork with AddPac video door phone access control server (AP-ACS1000), video phone, and soft phone to provide an excellent scalability. Also, it supports the latest audio/video codec at optimum level. IP video door phone selection standard is to accept the VoIP standard signal and convenience. AP-ACS1000 Door Access Control System offers the enterprise level IP video access solution.

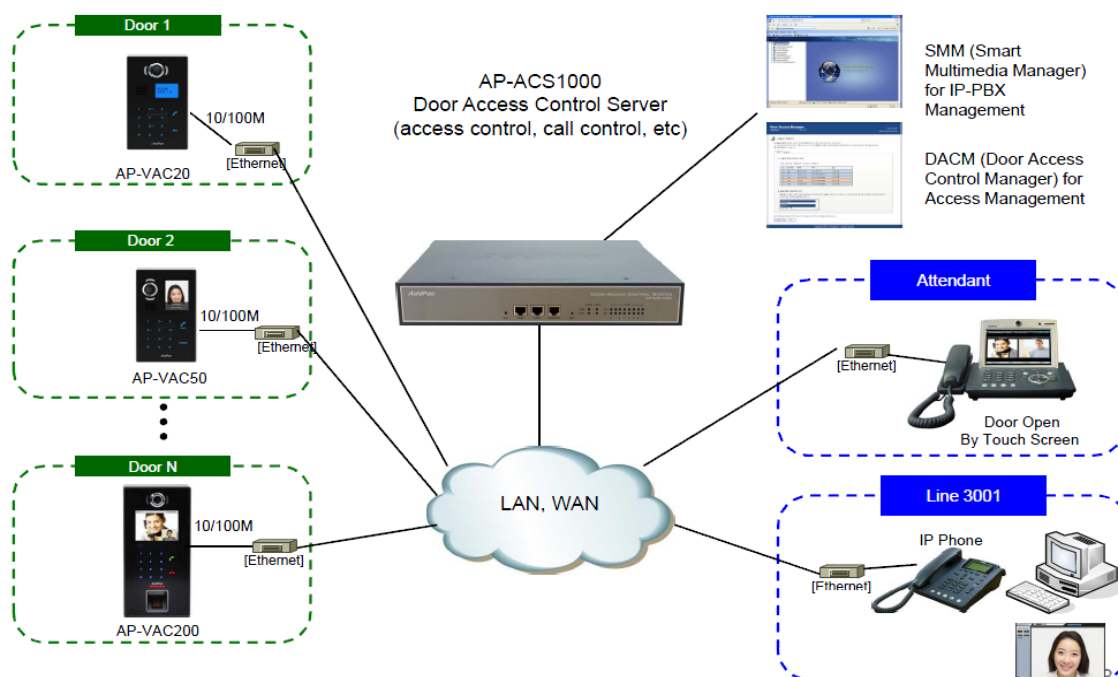
### Door Access Control Server Comparison Table

Model		AP-ACS1000	AP-ACS500
Service Features			
Registration User Number		100	30
Concurrent Call User Number		30	15
IPv4/IPv6 Dual Stack Support		Support	Support
VoIP Signaling	Internal	SIP	SIP
	External	H.323/SIP	H.323/SIP
Powerful IVR, UMS, Media Service, User Presence Service		Support	Support
RTP Proxy Service (IPv6, Private IP)		Support	Support
LAN Port		2	2
VoIP Module Slots for PSTN		2 Slots (8 Port Module)	N/A
VoIP Interface		FXS,FXO,E1/T1	Option
Video Door Phone Control (RF card, etc)		Support	Support
Time & Attendance Management		Support(option)	Support (Option)

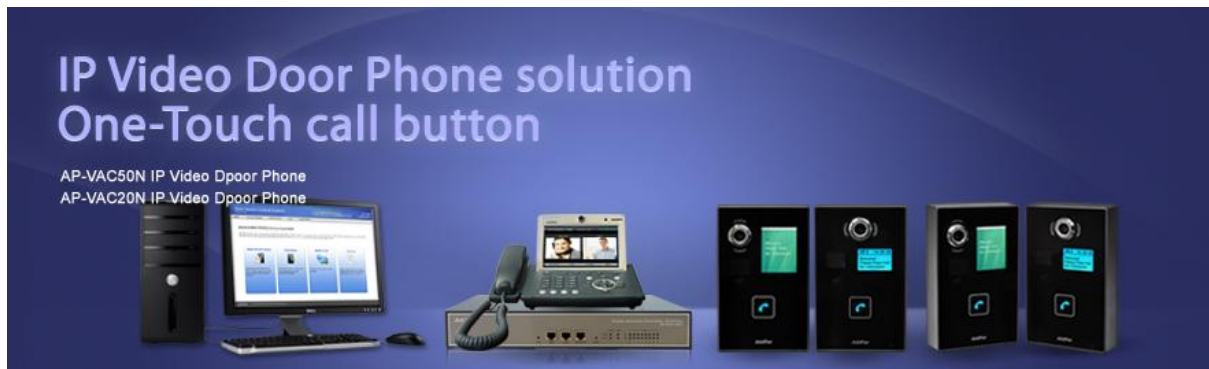
## IP Video Door Phone Comparison Table

Model	AP-VAC200	AP-VAC100	AP-VAC70	AP-VAC50	AP-VAC20
Service Features					
Duplex (Voice)	Full Duplex	Full Duplex	Full Duplex	Full Duplex	Full Duplex
Key Pad	3x4 Key Support	3x4 Key Support	3x4 Key Support	3x4 Key Support	3x4 Key Support
LCD	3.5 Inch	3.5 Inch	2inch LCD	2inch LCD	Graphic LCD
RF Card	Support	Support	Support	Support	Support
Fingerprint	Support	N/A	N/A	N/A	N/A
Camera Sensor	SD(VGA)	SD(VGA)	HD Camera	SD(VGA)	SD(VGA)
Video Codec	SD, H.264/MPEG4	SD, H.264/MPEG4	HD, H.264/MPEG4	SD, H.264/MPEG4	SD, H.264/MPEG4
Voice Codec	G.711	G.711	G.711	G.711	G.711
Signaling	H.323/SIP	H.323/SIP	H.323/SIP	H.323/SIP	H.323/SIP
MIC & Speaker Phone	Support	Support	Support	Support	Support
LAN Port	1	1	1	1	1
PoE(Optional)	Support	Support	Support	Support	Support

## Network Diagram



## One-Touch Call Button IP Video Door Phone Solution

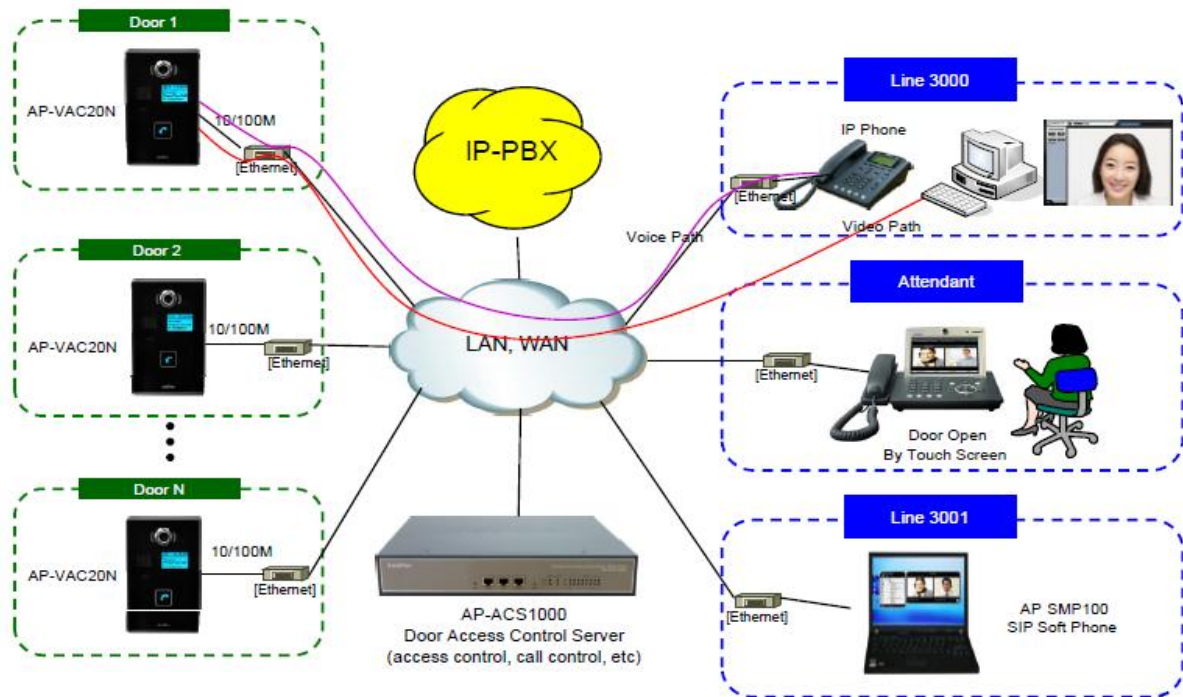


One-Touch Call Button SIP video door phone solution is to control the visitor access through video screen which can be installed at the entrance with internet connection. One Touch Call Button IP Video door phone (AP-VAC50N, AP-VAC20N) uses SIP standard VoIP signaling process function to interwork with AddPac video door phone access control server (AP-ACS1000, IP-PBX + Control Server), SIP video phone, and SIP soft phone to provide an excellent scalability. Also, it supports the latest audio/video codec at optimum level. SIP video door phone selection is to accept the VoIP standard signal and convenience. AP-ACS1000 Door Access Control System offers the enterprise level IP video access solution.

### One-Touch Call Button IP Video Door Phone Comparison Table

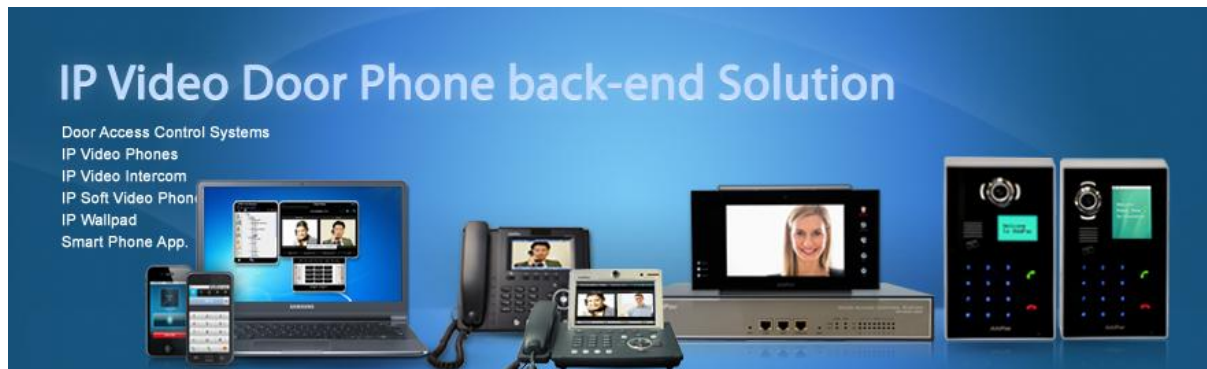
Model	AP-VAC50N 	AP-VAC20N 
Service Features		
Duplex (Voice)	Full Duplex	Full Duplex
Key Pad	One(1) Call Button	One(1) Call Button
LCD	2inch LCD	Graphic LCD
RF Card	Support	Support
Fingerprint	N/A	N/A
Camera Sensor	SD(VGA)	SD(VGA)
Video Codec	SD, H.264/MPEG4	SD, H.264/MPEG4
Voice Codec	G.711	G.711
Signaling	H.323/SIP	H.323/SIP
MIC & Speaker Phone	Support	Support
LAN Port	1	1
PoE(Optional)	Support	Support

## Network Diagram





## IP Video Door Phone Backend Product Solution



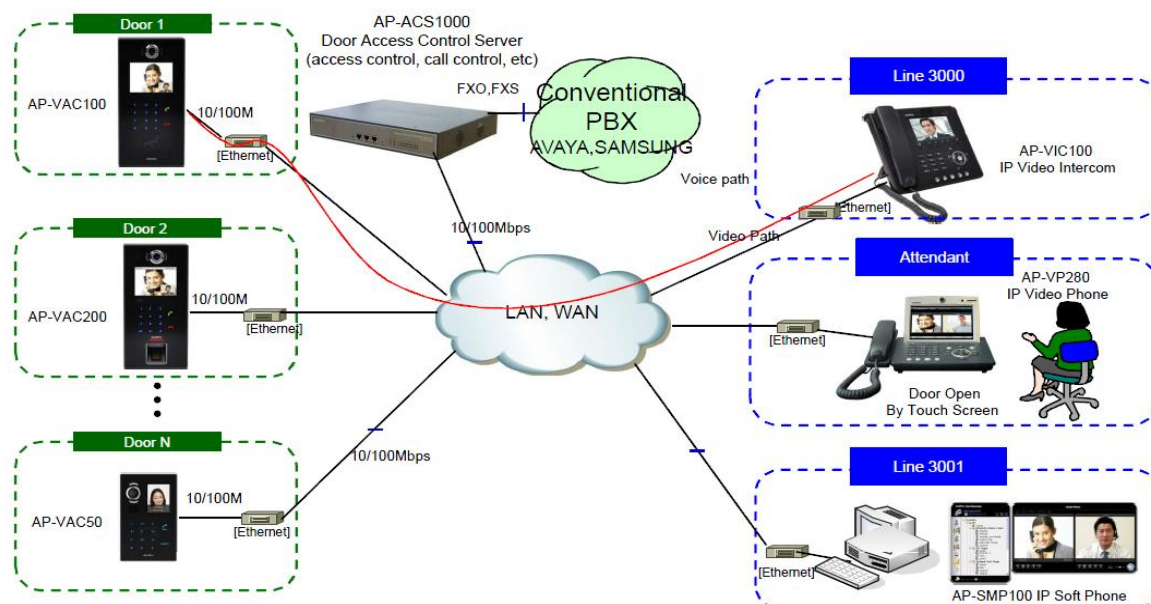
AddPac IP video door phone solution is to control the visitor access through video screen which can be installed at the entrance with internet connection. AddPac IP video door phone (AP-VAC20, 50, 100, 200) uses SIP standard VoIP signaling process function to interwork with AddPac IP video door phone backend products such as access control server (AP-ACS1000), video phone, video intercom, wall pad, smart phone and soft video phone to provide an excellent scalability. Also, it supports the latest audio/video codec at optimum level. IP video door phone selection standard is to accept the VoIP standard signal and convenience. AddPac DACS (Door Access Control System) supports both video door phone management/application service and hybrid IP-PBX function. Video door phone management function provides user management function, group management function, setup management function, RF card register and manages, fingerprint verification register and manage, and access log function and allow to extend the application service such as attendance/absence. It is designed on the basis of high performance embedded RISC and appropriate for small/medium enterprise. It interworks with various AddPac video products to support an efficient video door phone control server. IP-PBX function of DACS offers to connect several video door phones and administrator video phone using SIP standard call process technology. IP video phones are designed to deliver high quality video telephony service over IP network. This video phones provide not only cutting-edge features such as various AV in/out interfaces, QoS functions, public IP sharing but also a wide range of multiple VoIP signaling such as SIP, H.323 protocols and H.263, MPEG4, H.264 video codecs. With its modern design, AddPac video phones are equipped with the latest audio/video codec, high quality LCD and Built-In Camera interfaces. From the video conferencing, video telephony, video door phone service to the communication aid for the disabled, AddPac video phone becomes the best choice of all. IP video intercom controls visitor access through video screen using internet. It has an excellent scalability using SIP standard VoIP signal process feature by interworking with AddPac IP-PBX, IP video door phone.

This product is a new IP video intercom where Internet voice communications are combined with Internet video monitoring. This product provides advanced features and services such as video codecs (e.g. H.263, MPEG-4, H.264), QoS, and public IP sharing as well as multiple VoIP signaling protocols such as SIP and H.323. AP-VIC100 IP video intercom combines AddPac's field proven IP Telephony Technology and IP based Video Monitoring Technology. AP-SMP100 IP soft video phone is a MS Window based smart multimedia soft phone that allows you to make high quality and high resolution video communications by using the Internet. This product supports a video conference, point-to-point video communication, and IP video door phone service through the latest audio/video codecs and intelligent smart messenger capability. The criteria of choosing a soft phone are high quality audio/video service and easy dial-access features. AP-VWP100 IP video wall PAD controls visitor access through 7inch LCD screen using internet. It has an excellent scalability using SIP standard VoIP signal process feature by interworking with AddPac IP-PBX, IP video door phone. It provides enterprise visitor access control solution along with AddPac IP Video Door Phone, AP-ACS1000 Access Control Server. AP-VWP100 is a new IP video wall PAD for apartment, house, villa, etc where Internet voice communications are combined with Internet video monitoring. This product provides advanced features and services such as video codecs (e.g. H.263, MPEG-4, and H.264), QoS, and public IP sharing as well as multiple VoIP signaling protocols such as SIP and H.323.

## IP Video Door Phone Backend Product Table

Backend Products	Description	Model
	IP Door Access Control Servers	AP-ACS1000, AP-ASC500
	IP Video Phone (Bidirectional two-way video)	AP-VP280, etc
	IP Video Intercom (Unidirectional one-way video only)	AP-VIC100
	IP Soft Video Phone	AP-SMP100
	IP Video Wall PAD	AP-VWP100
	Smart Phone Application (3 <sup>rd</sup> Party)	Linphone appl. etc

## Network Diagram




## Video Surveillance IP Video Door Phone Solution

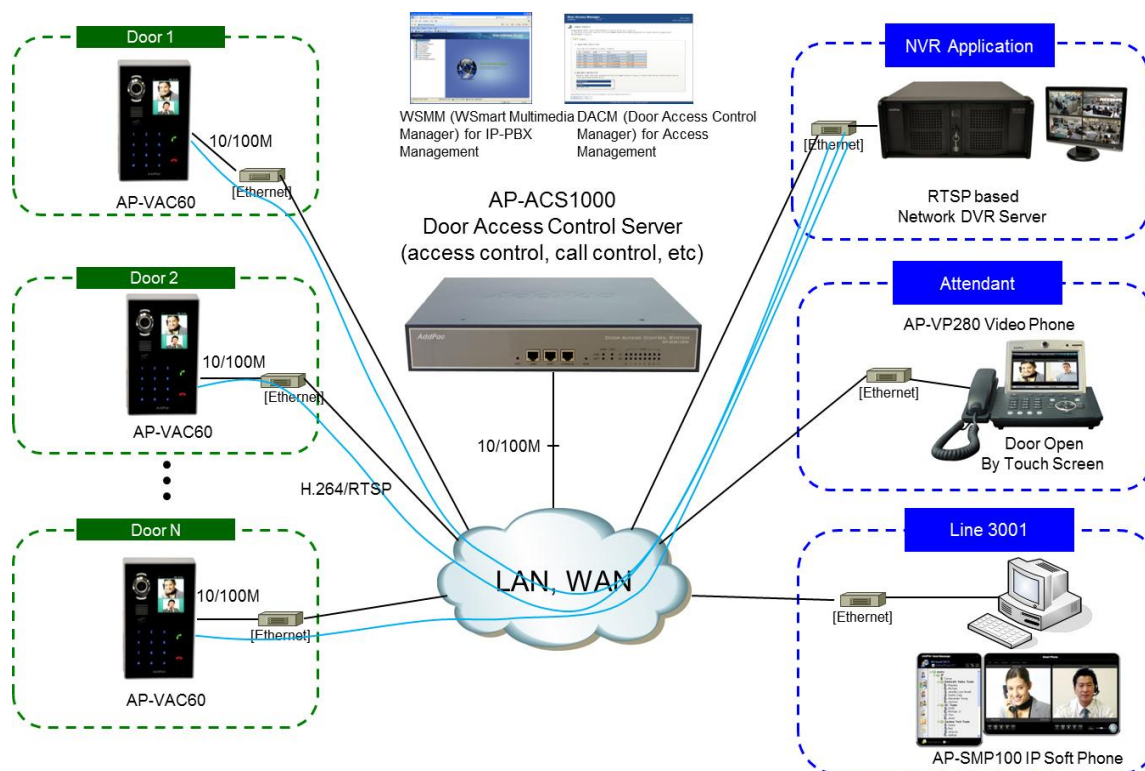


AddPac enterprise video surveillance SIP video door phone controls visitor access through video screen using internet. This system supports IP camera service beside basic SIP video door phone service. It has an excellent interoperability using SIP standard VoIP signaling feature by interworking with AddPac Access Control Server, Video Phone, and Soft Video Phone. It also supports the state of the art audio/video codec optimally such as H.264AVC, etc. It provides enterprise visitor access control solution along with AP-ACS1000 Access Control Server that has hybrid IP-PBX and door access application server features such as time-attendance, RF card registration, etc. Also, additionally, video surveillance SIP video door phone is designed to support IP camera service features for outdoor environment monitoring beside IP video door phone service. This IP camera service function can help to monitor, and record around outdoor environment using by AddPac Network Video Recording Server.

### Video Surveillance SIP Door Phone

Model	AP-VAC60	
Service Features		
Dual Video Encoding for Video Surveillance	Support	
SIP Door Phone	SIP Video Door Phone	
Duplex (Voice)	Full Duplex	
Key Pad	3 x 4 Key, etc	
LCD	3.5 inch LCD	
RF Card	Support	
Camera Sensor	SD(VGA)	
Video Codec	SD, H.264/MPEG4	
Voice Codec	G.711,G722(option)	
Signaling	SIP	
Protocol for Video Surveillance	RTSP	
MIC & Speaker Phone	Support	
LAN Port	1	
PoE(Optional)	Support	

## Network Diagram



## Time Attendance IP Door Phone Solution



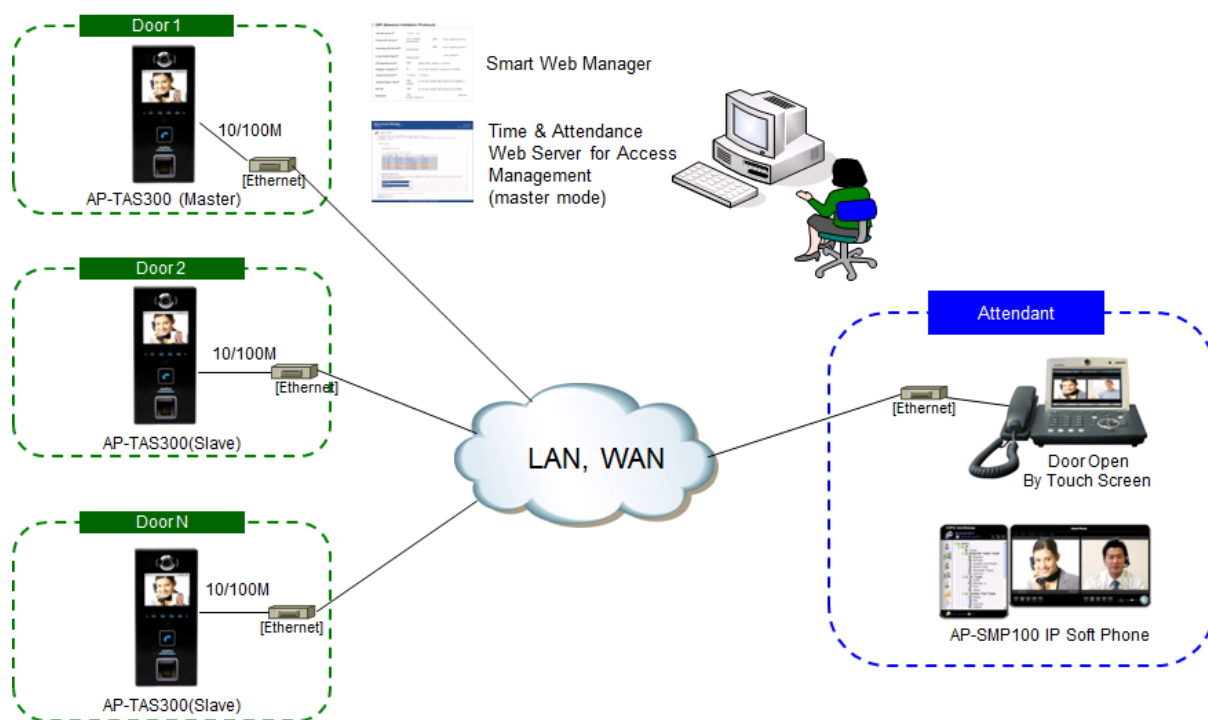
Time Attendance SIP video door phone solution(AP-TAS300, AP-TAS200) is a visitor access control unit through internet connection with built-in time & attendance function. It uses the SIP standard VoIP signal process feature, providing an excellent scalability by interworking with video phone, and SIP soft phone. It also supports the latest audio/video codec at the optimum level. Time Attendance SIP video door phones provide enterprise IP video visitor access control solution. AP-TAS300 Time Attendance IP video door phone is a device to open and close the door after verifying the identity of visitor. It is embedded with alarm, relay output port, and RS485 interface function to control the door remotely by interworking with automatic door. Also, it offers RF card, fingerprint verification technology for easier access of employees. AP-TAS300 supports both video door phone management/application service and SIP based video door phone function. Video door phone management function provides user management function, group management function, setup management function, RF card register and manages, fingerprint verification register and manage, and access log function and allow to extend the application service such as attendance/absence. Login Control, Daily Attendance Rules, Monthly Attendance Rules, Business Trip and Vacation, Report for Admin are main functions for AP-TAS300 time & attendance service. AP-TAS200 system is SIP voice door phone version of AP-TAS300. This AP-TAS200 supports voice call intercom function. The other features such as RF card, Fingerprint function, time & attendance function are almost same.

### Time Attendance SIP Door Phone Comparison Table

Model	AP-TAS300 	AP-TAS200 
Service Features		
Time & Attendance	Support	Support
SIP Door Phone	SIP <b>Video</b> Door Phone	SIP <b>Voice</b> Door Phone
Duplex (Voice)	Full Duplex	Full Duplex
Key Pad	One(1) Call Button	One(1) Call Button
LCD	3.5 inch LCD	3.5 inch LCD
RF Card	Support	Support
Fingerprint	Support	Support
Camera Sensor	SD(VGA)	N/A
Video Codec	SD, H.264/MPEG4	N/A
Voice Codec	G.711,G722(option)	G.711, G.722(option)
Signaling	SIP	SIP
MIC & Speaker Phone	Support	Support
LAN Port	1	1
PoE(Optional)	Support	Support



## Network Diagram





## HD IP Video Door Phone Solution



AddPac HD IP video door phone solution is the visitor access control system through video screen which can be installed at the entrance with internet connection. HD IP video door phone (AP-VAC250, AP-VAC70) uses SIP standard VoIP signaling process function to interwork with AddPac video door phone access control server (AP-ACS1000), video phone, and IP soft phone to provide an excellent scalability. Also, it supports the latest audio/video codec at optimum level. IP video door phone selection standard is to accept the VoIP standard signal and convenience. AP-ACS1000 Door Access Control System offers the enterprise level IP video access solution. HD IP video door phone solution is combination of signaling technology/voice processing technology, and the-state-of-the-art HD video processing technology. HD IP video door phone provides 128Kpbs~8Mbps level of network so that user may use anywhere with internet connection. Especially, it applies high end "error resilience" technology to cope with various packet errors and "rate control" to secure optimum level of resolution/frame rate in limited bandwidth environments. It also supports high performance H.264 AVC video codec for HD video quality.

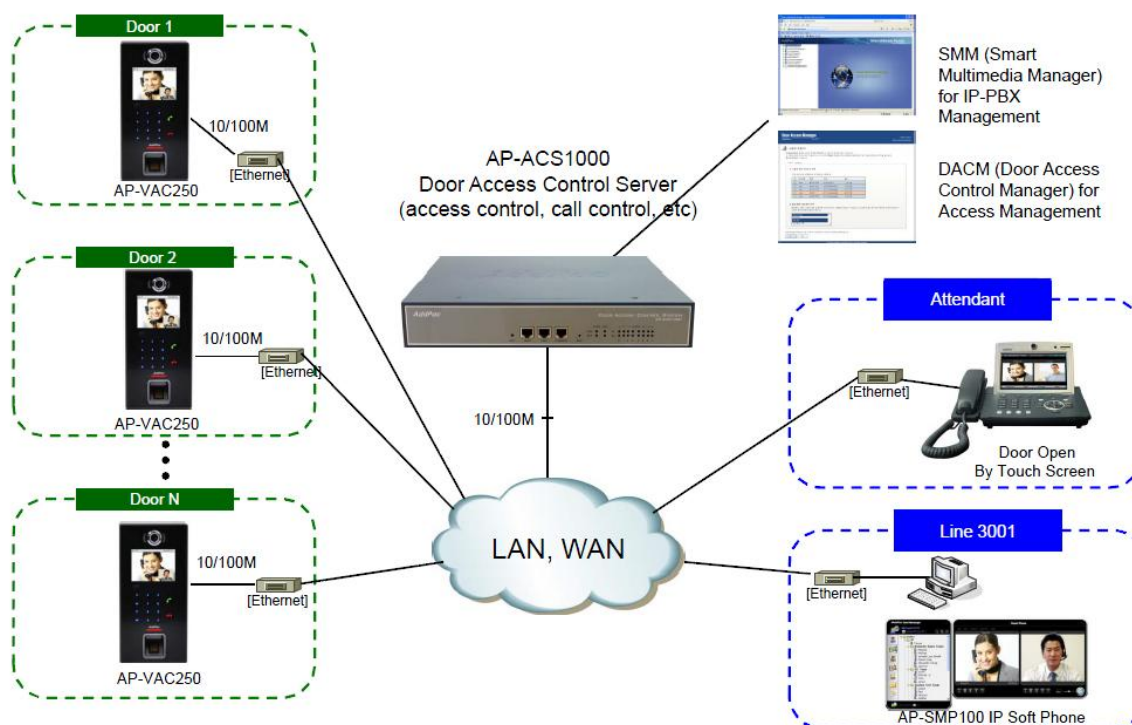
### Door Access Control Server Comparison Table

Model		AP-ACS1000	AP-ACS500
Service Features			
Registration User Number		100	30
Concurrent Call User Number		30	15
IPv4/IPv6 Dual Stack Support		Support	Support
VoIP Signaling	Internal	SIP	SIP
	External	H.323/SIP	H.323/SIP
Powerful IVR, UMS, Media Service, User Presence Service		Support	Support
RTP Proxy Service (IPv6, Private IP)		Support	Support
LAN Port		2	2
VoIP Module Slots for PSTN		2 Slots (8 Port Module)	N/A
VoIP Interface		FXS,FXO,E1/T1	Option
Video Door Phone Control (RF card, etc)		Support	Support
Time & Attendance Management		Support(option)	Support (Option)

## HD IP Video Door Phone Comparison Table

Model	AP-VAC250	AP-VAC70
Service Features		
Duplex (Voice)	Full Duplex	Full Duplex
Key Pad	3x4 Key Support	3x4 Key Support
LCD	3.5 Inch	2inch LCD
RF Card	Support	Support
Fingerprint	N/A	N/A
Video Camera	720P HD CMOS Sensor	720P HD CMOS Sensor
Video Codec	H.264/MPEG4	H.264/MPEG4
Voice Codec	G.711	G.711
Signaling	H.323/SIP	H.323/SIP
MIC & Speaker Phone	Support	Support
LAN Port	1	1
PoE(Optional)	Support	Support

## Network Diagram











**AddPac**

2F, Kyeong-An Bldg., 769-12 Yoeksam-dong  
Gangnam-gu, Seoul, 135-080 Korea

Email [sales@addpac.com](mailto:sales@addpac.com)  
Website [www.addpac.com](http://www.addpac.com)